

Bill Neumann | Principal | ASLA | LEED AP

Education

B.of Science in Landscape Architecture, Colorado State University, 1986

Bill understands the importance of creating spaces that benefit both communities and natural habitats. His work focuses on new communities, including theming, streetscapes, parks, trails and open spaces. He strongly believes in producing high quality designs (beyond the predictable) and graphics that help his clients visualize what the project will become when built. Bill has worked on projects throughout the state of Colorado and numerous national park projects across the country. Bill has managed complex multidisciplinary teams, including planners, engineers, surveyors and ecologists. On every project, Bill considers the construction phase of a project equal in importance to the design process. He is often found working in the field with contractors to ensure the best possible built result. Bill continually works to challenge his staff to strive for innovative, creative design solutions for the clients DHM is proud to serve.

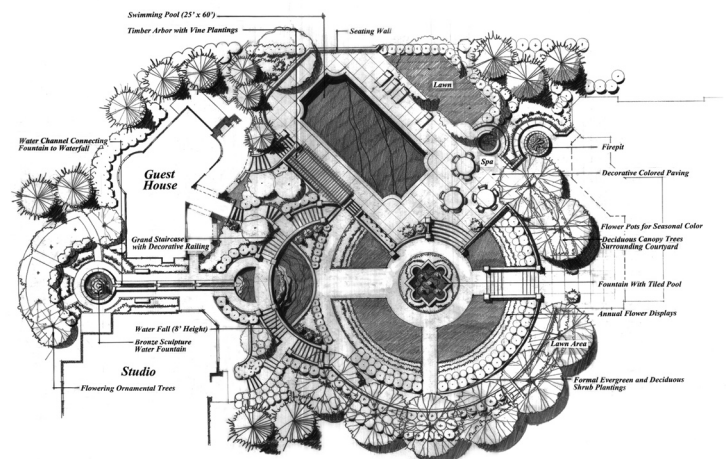
Awards

Sand Creek Greenway
CCASLA Merit Award for Planning
& Land Steward Designation

Littleton Residence, CO Littleton
CCASLA Honor Award

Private Residence, Cherry Creek CO
CCASLA Merit Award

CCASLA Merit Award for Planning
Mount Rushmore National Memorial



RESUME PROJECT LIST:

Urban Design/Transportation/Streetscape

Highway 2 Beautification; Commerce City, Colorado
Dry Creek Medians; Arapahoe County, Colorado
The Farm at Arapahoe County; Arapahoe County, Colorado
Littleton Railroad Beautification; Littleton, Colorado
Dove Valley Streetscape, Arapahoe County, CO
Buckley Road Streetscape; Arapahoe County, CO
106th Avenue & Biscay Streetscape
Reunion Streetscape, Commerce City, CO
The Preserve at Greenwood Village Streetscape; CO
Northern Range Streetscape Master Plan, Commerce City, CO
Green Valley Ranch 48th Avenue Streetscape; CO
104th Avenue Streetscape; Commerce City, CO

Parks/Rec/OpenSpace

Rendezvous Park; Fraser, CO
Grand Park; Fraser, CO
Silverthorne Parks, Trails and Open Space Plan; Silverthorne, Colorado
Prairieways Parks & Open Space Master Plan; Commerce City, Colorado
Sand Creek Greenway Trail; Commerce City, Colorado
Heart of Trinidad River Trail; Trinidad, Colorado
Bear Creek Trail and Greenway; Morrison, Colorado
10,000 Trees Greenway; Littleton, Colorado
Cotton Creek Park; Westminster, Colorado
Creeside Park at the Farm; Arapahoe County, Colorado
Sundance Neighborhood Park; Greenwood Village, Colorado
Legacy Pavilion and Community Park Master Plan; Commerce City, Colorado
Westminster City Park; Westminster, Colorado
Cherry Creek Vista Park; Greenwood Village, Colorado
Commerce City Skate Park; Commerce City, Colorado
Denver Audobon Nature Center and Park; Jefferson County, Colorado
Central Park; Arapahoe County, Colorado
Mount Rushmore National Memorial Visitor Facilities Improvements; Keystone, South Dakota
Fort Necessity Battlefield Visitor Center; Pennsylvania
Happy Meadows Park; Cordera, Colorado Springs, CO
Ye Olde Castlewood Park; Cordera, Colorado Springs, CO
Reunion Park; Commerce City, CO
Buffalo Run Golf Club; Commerce City, CO

Office/Commercial/Mixed Use

Inverness Hotel & Conference Center; Arapahoe County, CO
Cherry Creek Centre - Corporate Campus; Arapahoe County, CO
Commerce City Municipal Services Center, CO
Commerce City Hall Landscape Renovation, CO
Broomfield City Center; Broomfield, CO
Buffalo Run Golf Course Club House/Maintenance Facility; CO
Fort Necessity Headquarters Maintenance Facility; Pennsylvania
Coors Porcelain Plant Facility; Golden, CO
Meridian International Office Complex; Douglas County, CO
The Villages at Centennial; CO
Cherry Creek Centre - Corporate Campus; Arapahoe County, CO
Westminster Promenade; Westminster, CO
Cherry Hills 3 Townhomes; CO
Northlands Village; Broomfield, CO
Centennial Business Park; Louisville, CO
Briargate Crossing; Colorado Springs, CO

RESUME PROJECT LIST:

Residential

Residence at Pine Grove; Englewood, Colorado
Residence at Cherry Creek Park Hill; Cherry Hills Village, Colorado
The Farm; Arapahoe County, Colorado
The Bluffs at Pinehurst; Denver, Colorado
The Preserve; Greenwood Village, Colorado
The Myklak Residence; Colorado Springs, Colorado
Residence at Littleton; CO
Residence at Cherry Hills Farm; Denver, CO
Residence at Evergreen; CO
Residence at Colorado Springs; CO
Residence at Cherry Hills Village; Denver, CO

In addition, Bill provides review of landscape design for Cherry Hills Farm and is a member of the Design Review Board for The Preserve and The Keep.

Community Design

North Lincoln Park; Denver, CO
Cordera; Colorado Springs, CO
Green Valley Ranch; Denver, Colorado
The Preserve; Greenwood Village, Colorado
The Farm at Arapahoe County; A. County, Colorado
Wheatlands; Aurora, Colorado
Reunion, Commerce City, Colorado
Hubbell Trading Post Community Planning/Employee Housing, National Historic Site; Arizona

Educational/Campus Facilities

Cherry Creek High School #4; Aurora, Colorado
Running Creek Elementary School; Elizabeth, Colorado
College for Financial Planning; Greenwood Village, Colorado
Mission Hills Church Landscape Master Plan:
Elementary School at River Run: CO
Belle Creek Charter School: CO

Health Facilities

Arapahoe Convalescent Center; Arapahoe County, Colorado
Arapahoe Medical Park; Littleton, Colorado
National Jewish Center; Denver, Colorado

Civic Projects

Commerce City Recreation Center, CO
Municipal Services Center, Commerce City, CO
Dove Valley Streetscape, Arapahoe County, CO
Zone 7 Pump Station, Aurora, CO
Tomlinson Park, Arvada, CO